

polyethylene pipes

for sewerage (gravitational)



The appropriate thickness of the pipe in sewer systems is determined according to the external load, i.e. the pressure from the ground and traffic. Since one of the characteristics of plastics is creep, deformations increase over time. Deformations can be short-term or long-term.

Polyethylene pipes must be dimensioned in such a way that after 50 years long-term deformation does not exceed 6%. Calculations for polyethylene pipes that are laid into the ground, excluding pressure, are made according to the ATV-Worksheet A 127 "Guidelines for static calculations of discharge channels and lines". Materials built in around the pipeline must enable permanent stability, accept the load in the pipeline zone of the ground and must not affect the pipe material. Filling in the pipeline zone, including bed zone, side filling and soil cover zone, is performed according to SIST EN 1610 and SIST ISO 8772 standards.

Butt-welding and resistance butt-welding procedures are used for joining pipes and fitting elements.

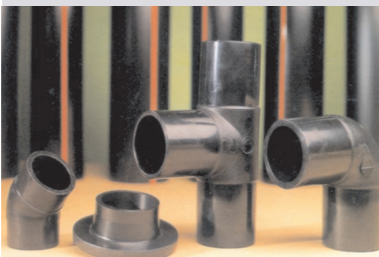
Butt-weld joint



Resistance butt-weld joint



Fitting and coupling elements



Flange



The manufacturer reserves the right to make potential technical changes.

ISO 9001

BUREAU VERITAS
Certification



MINERVA ŽALEC, d.d.

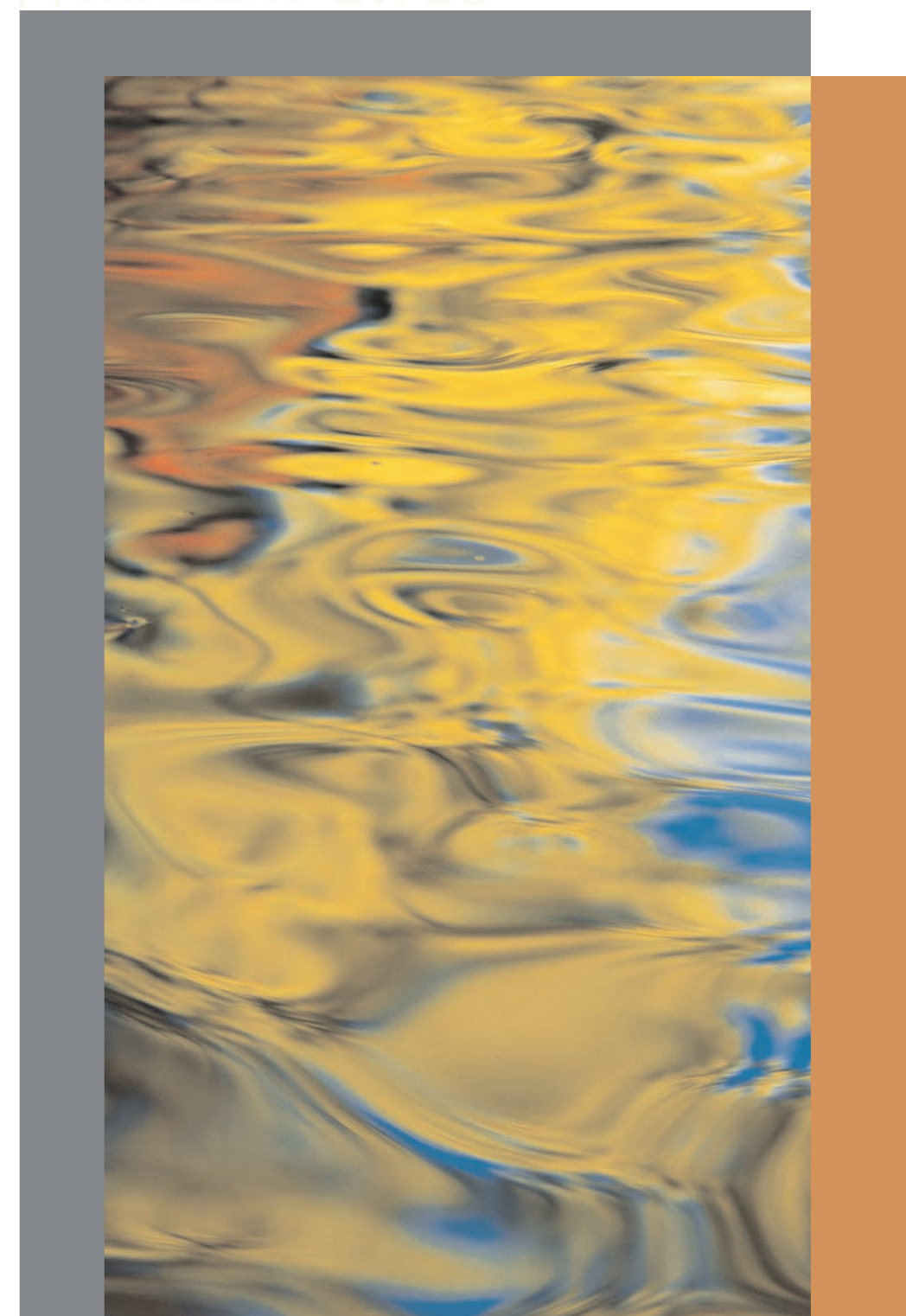
predelava plastike in kovin • Ložnica pri Žalcu 37 • 3310 Žalec
tel.: +386 (0)3 71 36 200 • fax: +386 (0)3 71 36 202
e-mail: uprava@minerva.si • web: http://www.minerva.si/

polyethylene pipes

for sewerage (gravitational)



MINERVA ŽALEC d.d.



polyethylene pipes

for sewerage (gravitational)

In this day of constant increase of production and consumption of goods, mankind is facing a great problem - where and how to remove waste waters. This is becoming more and more important as the world is trying to keep the environment clean. Watertight sewer systems have proven to be more indispensable. Modern technology demands simple, cost-effective and safe solutions, and in production of sewer system pipes and fittings polyethylene has proven to be indispensable.

Polyethylene pipes are all of the above. Their utility in domestic and industrial (agressive waste) waste water systems in reparation of old sewer networks in city centres and in restoration of lakes saturated with waste is completely reliable.

Furthermore, watertight sewer systems are also necessary in construction of domestic housing and commercial buildings in cities and villages. Where drinking water is still supplied from wells, non watertight sewer systems present a hazard for the health of the local population.

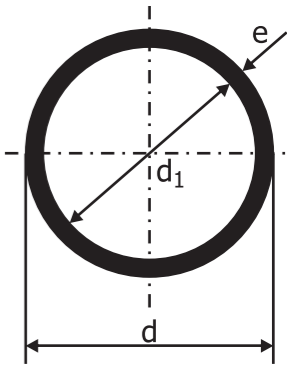
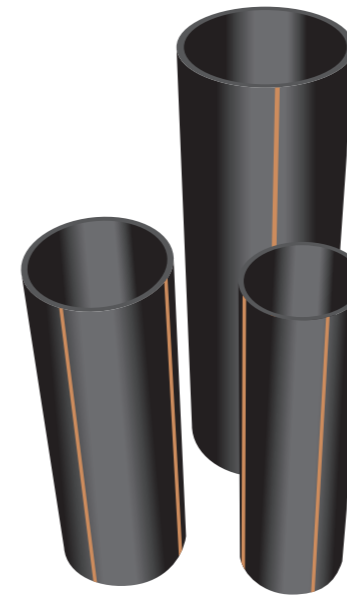
In addition to the above, here are some advantages polyethylene pipes have in comparison with classical pipes:

- great lengths (6 m to 12 m)
- light-weight
- quick and easy installation
- high flow-capacity
- chemical resistance
- cheap and easy transport
- versatile utility in wastewater removal



polyethylene pipes

for sewerage (gravitational)



The pipes are compliant with the SIST EN 12666-1 and SIST ISO 8772 standards.

e = wall thickness of the pipe
d = outer diameter of the pipe

Table 1: Dimensions of PE wastewater pipes (mm) - gravitational

Nominal thickness of the wall d	Circumferential rigidity (SN) - pipe series (S) - nominal diameter of te pipe (e)					
	SIST EN 12666 - 1			SIST ISO 8772		
	SN2 S16	SN4 S12,5	SN8 S10	SN2 S16	SN4 S12,5	SN16 S8
110	3,4	4,2	5,3	3,4	4,2	6,6
125	3,9	4,8	6,0	3,9	4,8	7,4
140				4,3	5,4	8,3
160	4,9	6,2	7,7	4,9	6,2	9,5
180				5,5	6,9	10,7
200	6,2	7,7	9,6	6,2	7,7	11,9
225				6,9	8,6	13,4
250	7,7	9,6	11,9	7,7	9,6	14,8
280				8,6	10,7	16,6
315	9,7	12,1	15,0	9,7	12,1	18,7
355	10,9	13,6	16,9	10,9	13,6	21,1
400	12,3	15,3	19,1	12,3	15,3	23,7
450	13,8	17,2	21,5	13,8	17,2	26,7
500	15,3	19,1	23,9	15,3	19,1	
630	19,3	24,1		19,3	24,1	